



# Primary health care programs and data linkage

Care coordination and  
Strength to Strength

**phn**  
TASMANIA

An Australian Government Initiative

# Care Coordination for:

## - People with Chronic Disease & Aged Care Clients

- **Aims:**
  - to be delivered sustainably;
  - to support overall improvements in system wide health outcomes; and
  - to reduce inappropriate and avoidable service utilisation across the health care sector
- **Care Coordinator assigned to assist client in managing their chronic health conditions**
- **Pilot program with evaluation of 3 models**
- **Multiple referrals pathways**
- **Reporting via portal to central DataBase**

# Strength to Strength: Free, 12 week exercise program for people with chronic health conditions and elderly, frail people

## **Aims**

- Reducing hospital readmissions
- Improving post hospital outcomes
- Improving participant self-management
- Improving participant quality of life

## **The program offers participants:**

- Pre and post assessment
- Once a week exercise session
- Individually tailored exercise program
- Regular program updates
- Home exercise program
- Education sessions

# HREC Approval & Client Consent

- **Program Evaluation via Datalinkage project considered some time after programs commenced**
- **HREC approval required**
- **Clients continued through the program while approval process underway**
- **Client consent process:**
  - **De-identified data obtained from State Health System**
  - **Opt in consent**
  - **Retrospective Waiver**
  - **Early Datalinkage analysis required due to changed Commonwealth requirements**
  - **Opt out consent**
- **Lessons learned**

## Data Linkage Context

**Initiatives commence during period of increased separations for cohorts of interest**

**Providing access to its clients to a range of services that may subsequently result in reduced access to the acute health system**

**Analysis commenced one year earlier than expected**

## Data linkage analysis

**Comparing the assessed and control group of clients**

**Time to a client's first presentation or admission (i.e. survival analysis)**

**Presentations and admissions one year and six months either side of the referral date.**

# Data linkage results

**No significant difference in time to first presentation or admission**

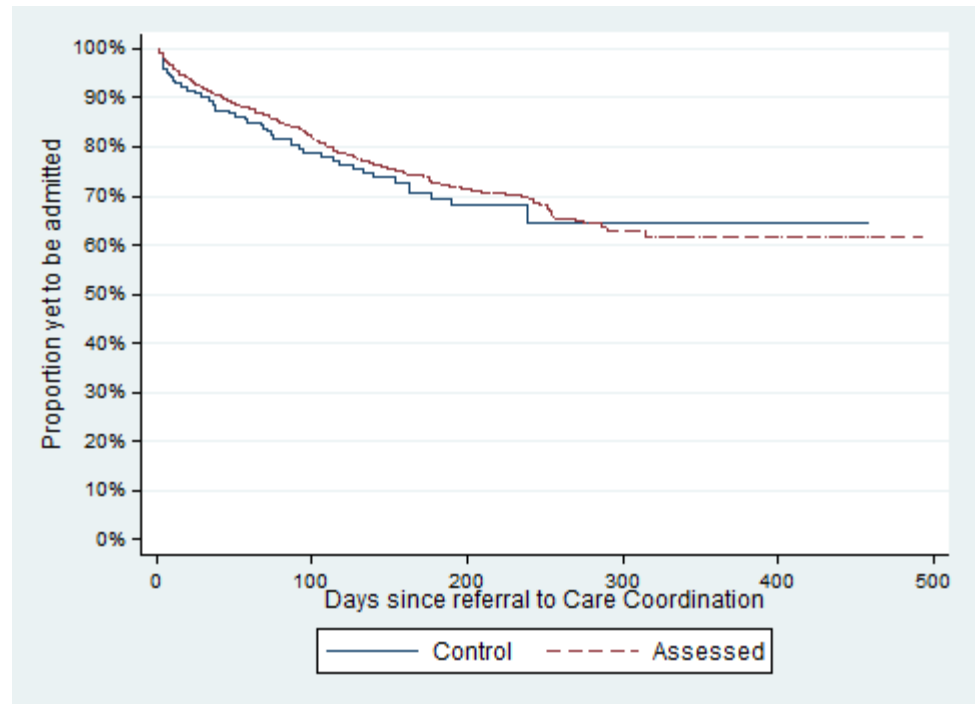


Table 1: Assessed group clients, admissions and total LOS in the six months either side of referral

Number Admits	Six months before			Six months after		
	Clients	Admissions	Total LOS	Clients	Admissions	Total LOS
0 admits	383	0	0	415	0	0
1 admit	109	109	561	87	87	789
2 admits	46	92	700	50	100	683
3 +	50	260	1,518	36	173	875
<b>Total</b>	<b>588</b>	<b>461</b>	<b>2,779</b>	<b>588</b>	<b>360</b>	<b>2,347</b>

**No significant difference in presentations and admissions six months either side of referral**

## Data Linkage summary

**There was a small reduction in the number of hospital admissions for Care Coordination clients**

**Numbers were too small to suggest attribution**

**Analysis commenced one year earlier than expected**

**Start talking about linkage from program commencement**