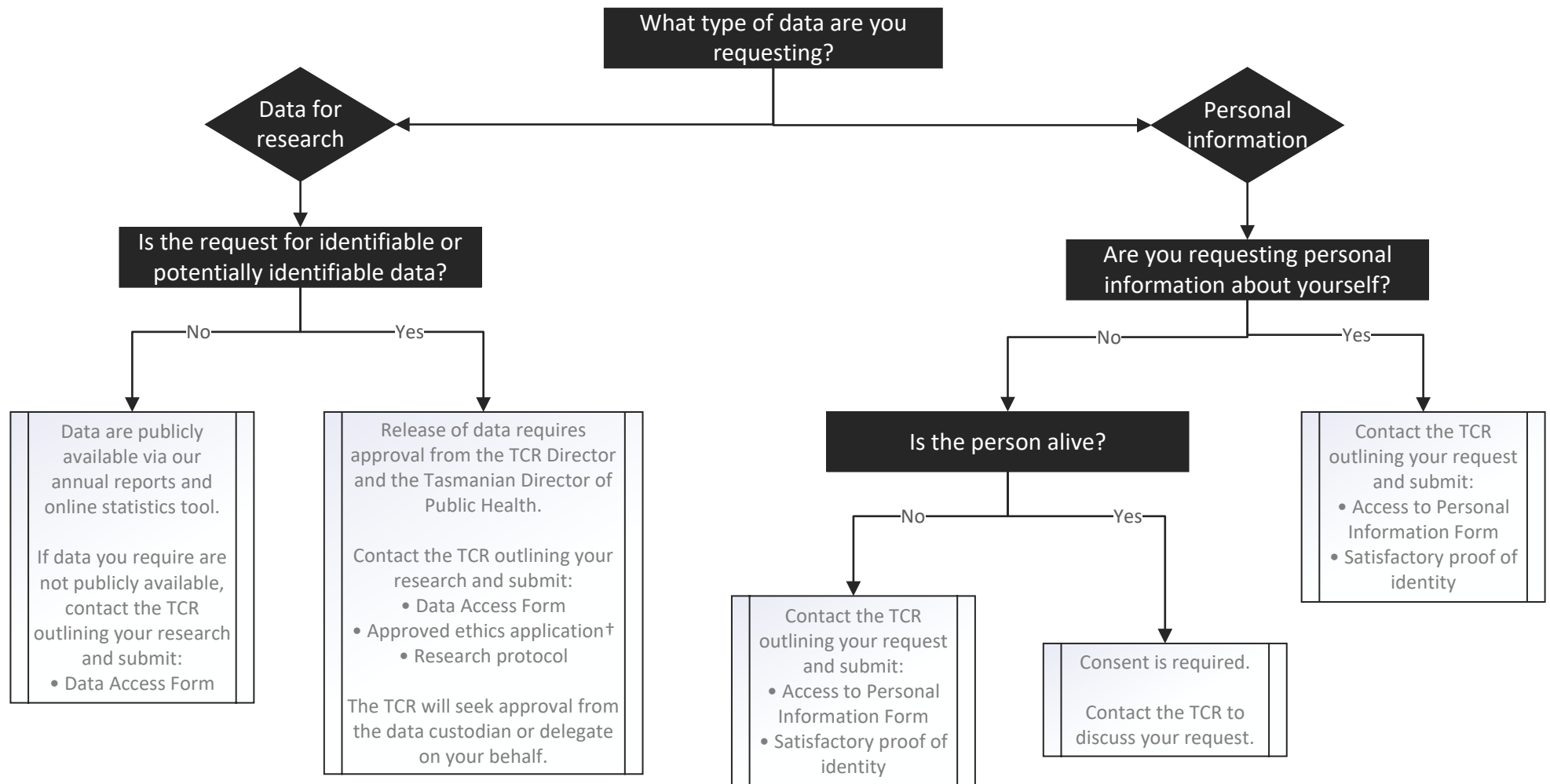


# Tasmanian Cancer Registry – Data Access Guidelines\*



\* These are guidelines only. Always contact the TCR at first instance to discuss your data requirements and request the relevant forms.

† The TCR accepts approved applications from specialist National Mutual Acceptance (NMA) Human Research Ethics Committees (HREC); however, researchers affiliated with the University of Tasmania (UTAS) *must* obtain approval from UTAS HREC.